

HYDRAULIC BREAKER

PURSUIT OF EXCELLENCE

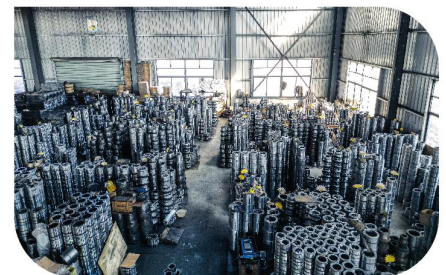
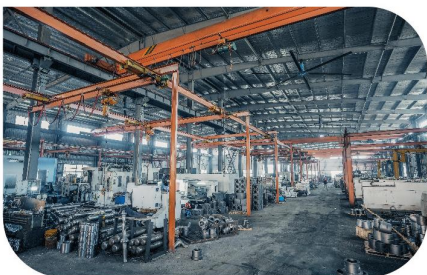
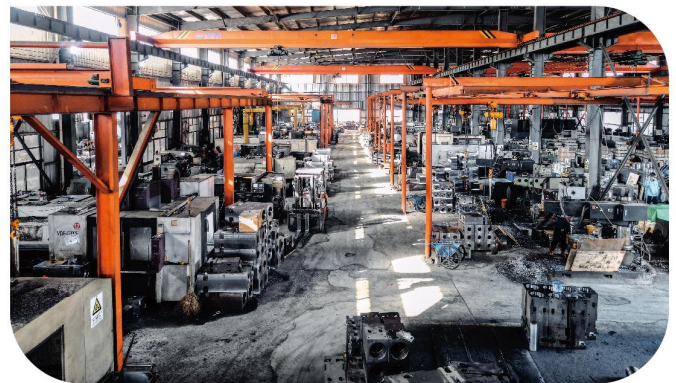


COMPANY INTRODUCTION

Maanshan DongQiang Machinery Manufacturing Co.,Ltd. was established in 2014.The factory now covers an area of more than 20 acres.However,an expansion is currently underway.It will cover a larger than 50 acres. It has a workforce of 83 employees,that have accomplished annual sales of 13.8 million USD.The factory mainly produces hydraulic breakers,cylinders,back head,front head,piston,chisel pin,inner bush,outer bush,through bolt, side bolt and chisel.

Our factory's equipment include :High precision horizontal machining center 2sets,Central cylinder dedicated eccentric groove milling machine 1set,CNC high-precision internal grinding 2sets,Cylinder block special large punching machine 3sets, Special crescent groove milling for cylinder 3sets,Vertical machining center 13sets and so on.

Our company provides spare parts and OEM service for famous breaker brands and domestic large trading companies.



DQ BREAKER

SPECIFICATIONS

DQ SERIES HYDRAULIC BREAKERS

Model		DQ10	DQ20	DQ30	DQ40	DQ43	DQ45	DQ50	DQ55	DQ60	DQ70	DQ75
Chisel Diameter (Φmm)		40	45	53	70	75	85	100	120	125	135	135
Chisel Weight(Kg)		4	6	9	16	26	36	56	90	105	128	128
Weight	Side Type(Kg)	90	135	164	254	390	522	755	1100	1276	1750	1706
	Top Type(Kg)	102	145	170	292	408	587	706	1130	1310	1800	1760
	Box Type(Kg)	136	160	198	290	448	600	786	1200	1380	1860	1820
Impact Power(J)		400~450	500~550	600~650	700~750	900~950	1100~1200	1800~2000	3000~3500	3500~3800	4000~4500	4000~4500
Hydraulic Oil Flow(l/min)		20~30	20~30	25~40	30~45	40~80	45~85	80~110	90~120	90~120	125~130	125~130
Hydraulic Pressure(bar)		80~110	80~110	90~120	95~130	130~150	130~150	150~170	150~170	150~170	160~180	160~180
Blow Frequency(bpm)		700~1050	600~980	500~850	450~750	400~300	400~800	450~630	400~900	400~530	400~800	400~800
High Nitrogen Pressure(kg/cm ²)		/	/	/	/	/	/	/	55-60	/	55-60	55-60
Low Nitrogen Pressure(kg/cm ²)		12-16	12-16	12-16	12-16	12-16	12-16	12-16	5-6	12-16	5-6	5-6
Supporting Excavator	Bucket Capacity(m ³)	0.08~0.1	0.1~0.15	0.1~0.2	0.15~0.25	0.2~0.3	0.3~0.4	0.4~0.6	0.5~0.7	0.5~0.75	0.6~1.0	0.6~1.0
	Carrier Weight(ton)	1~3	2~4	3~5	4~7	6~9	7~12	10~16	14~18	14~19	18~23	18~23
Model		DQ81	DQ81A	DQ100	DQ121	DQ131	DQ151	DQ180	DQ185	DQ190	DQ210	DQ225
Chisel Diameter (Φmm)		140	140	150	155	165	175	180	185	190	210	225
Chisel Weight(Kg)		128	128	165	198	220	247	310	340	370	452	500
Weight	Side Type(Kg)	2100	2120	2600	2740	3250	3788	3880	4480	4642	50140	6150
	Top Type(Kg)	2150	2170	2730	2780	3270	3909	4050	5045	5120	6000	7320
	Box Type(Kg)	2130	1770	2760	2800	3380	4130	/	/	/	/	/
Impact Power(J)		4500~5000	4500~5000	5000~5500	6000~7000	7000~8000	8000~9000	11000~12000	16500~18600	18500~20000	23400~25400	25200~26300
Hydraulic Oil Flow(l/min)		120~150	120~150	150~190	170~240	190~250	160~180	170~190	220~340	230~350	250~380	250~380
Hydraulic Pressure(bar)		160~180	160~180	160~180	160~180	160~180	210~290	210~290	210~290	210~290	210~290	210~290
Blow Frequency(bpm)		400~490	400~490	350~700	320~450	300~600	200~350	200~350	200~350	200~350	200~350	200~350
High Nitrogen Pressure(kg/cm ²)		/	55-60	55-60	55-60	55-60	55-60	55-60	55-60	55-60	55-60	55-60
Low Nitrogen Pressure(kg/cm ²)		12-16	12-16	12-16	14-18	18-24	20-26	20-26	20-25	20-25	22-28	25-30
Supporting Excavator	Bucket Capacity(m ³)	0.85~1.2	0.85~1.2	1.1~1.5	1.2~1.6	1.3~1.8	1.4~2.0	1.4~2.0	1.6~4.0	1.6~4.0	2.6~5.0	3.0~5.5
	Carrier Weight(ton)	19~25	19~25	25~30	28~35	35~45	40~55	40~55	45~60	45~60	60~100	70~100

DQ BREAKER

PRODUCTION EQUIPMENT DISPLAY



Central Cylinder Dedicated
Eccentric Groove Milling
Machine



CNC High-Precision
Cylindrical Grinding



High Precision Horizontal
Machining Center



Cylinder Block Special Large
Punching Machine



High precision Vertical Center



Vertical Machining Center



Special Crescent Groove
Milling For Cylinder



Vertical Machining Center

DQ BREAKER

SPARE PARTS DETAILS



PAINTING DETAILS

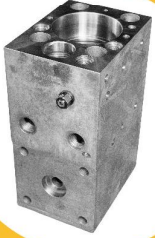


PACKING



DQ BREAKER

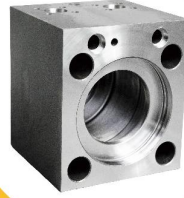
BREAKER SPARE PARTS



Cylinder



Front Head



Back Head



Piston



Chisel



Accumulator



Bolt



Bush sets



Rod pin



Rod pin



Charging kit nitrogen



Seal kits



Diaphragm



Nitrogen gas bottle



Automatic butter



Bracket

DQ BREAKER

PRODUCT INSPECTION



DQ BREAKER

SHIPMENTS



DQ BREAKER

OTHER PRODUCTS



Clamp Bucket



Clamshell Bucket



Compacting Wheel



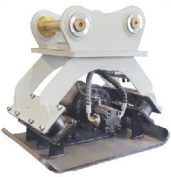
Concrete Crusher



Excavator Clamp Arm



Excavator Clamp Arm



Hydraulic Plate Compactor



Ripper



Rotary Pulverizer



Heavy-duty Pulverizer



Hydraulic Quick Hitch (Double Lock Type)



Tilt Bucket



Excavator Rake



Hydraulic Rotating Log Grapple



Hydraulic ShearA



Hydraulic ShearC



Hydraulic ShearE



Hydraulic ShearX



Hydraulic Steel Grab



Eagle Shear



Machinery Pulverizer



Magnet Pulverizer



Mechanical Grapple A



Mechanical Grapple C



Mini Crusher



Mini Pulverizer



Multifunctional pawl



Orange Peel Grapple A



Orange Peel Grapple B



Pile Hammer



Sorting Grab



powerful Shear



Excavator Magnet Lift (Electromagnetism)



Excavator Magnet Lift (Hydraulic pressure)



Rotating Powerful Pulverizer



Sleeper Machine

HYDRAULIC BREAKER

PURSUIT OF EXCELLENCE



www.dqbreaker.com

Maanshan Dongqiang Machinery manufacturing Co.,LTD

Address: 100 meters southwest of Boshang Chuangdao Zhizuo Industrial Park, Bowang District, Maanshan City, Anhui Province